



GPR119 Polyclonal Antibody

Catalog No	YP-Ab-13290
Isotype	IgG
Reactivity	Human;Rat;Mouse;
Applications	WB;IF;ELISA
Gene Name	GPR119
Protein Name	Glucose-dependent insulintropic receptor
Immunogen	The antiserum was produced against synthesized peptide derived from human GPR119. AA range:186-235
Specificity	GPR119 Polyclonal Antibody detects endogenous levels of GPR119 protein.
Formulation	Liquid in PBS containing 50% glycerol, 0.5% BSA and 0.02% sodium azide.
Source	Polyclonal, Rabbit,IgG
Purification	The antibody was affinity-purified from rabbit antiserum by affinity-chromatography using epitope-specific immunogen.
Dilution	Western Blot: 1/500 - 1/2000. Immunofluorescence: 1/200 - 1/1000. ELISA: 1/10000. Not yet tested in other applications.
Concentration	1 mg/ml
Purity	≥90%
Storage Stability	-20°C/1 year
Synonyms	GPR119; Glucose-dependent insulintropic receptor; G-protein coupled receptor 119
Observed Band	37kD
Cell Pathway	Cell membrane; Multi-pass membrane protein.
Tissue Specificity	Predominantly expressed in the pancreas, especially in the islets.
Function	function:Receptor for the endogenous fatty-acid ethanolamide oleoylethanolamide (OEA) and lysophosphatidylcholine (LPC). Functions as a glucose-dependent insulintropic receptor. The activity of this receptor is mediated by G proteins which activate adenylate cyclase. Seems to act through a G(s) mediated pathway.,similarity:Belongs to the G-protein coupled receptor 1 family.,tissue specificity:Predominantly expressed in the pancreas, especially in the islets.,
Background	This gene encodes a member of the rhodopsin subfamily of G-protein-coupled receptors that is expressed in the pancreas and gastrointestinal tract. The encoded protein is activated by lipid amides including lysophosphatidylcholine and oleoylethanolamide and may be involved in glucose homeostasis. This protein is a potential drug target in the treatment of type 2 diabetes.[provided by RefSeq, Jan 2010],



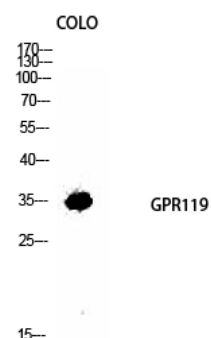
matters needing attention

Avoid repeated freezing and thawing!

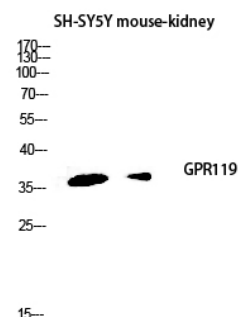
Usage suggestions

This product can be used in immunological reaction related experiments. For more information, please consult technical personnel.

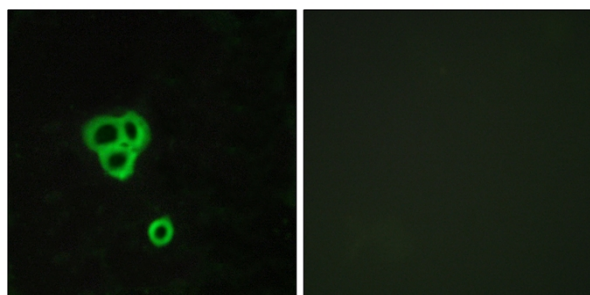
Products Images



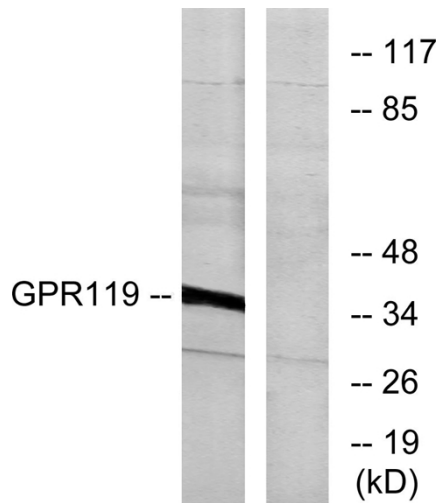
Western Blot analysis of COLO cells using GPR119 Polyclonal Antibody diluted at 1:1000



Western blot analysis of SH-SY5Y mouse-kidney lysis using GPR119 antibody. Antibody was diluted at 1:1000



Immunofluorescence analysis of MCF7 cells, using GPR119 Antibody. The picture on the right is blocked with the synthesized peptide.



Western blot analysis of lysates from K562 cells, using GPR119 Antibody. The lane on the right is blocked with the synthesized peptide.